

Axial piston motor type M60N

Axial piston motors are constant motors. They have a constant displacement and therefore generate a fixed rotation speed dependent on the flow rate.

The axial piston motor type M60N is designed for open and closed circuits and operates based on the bent axis principle.

The motor is particularly suitable for usage in mobile applications.

Features and benefits:

- Optimized power-to-weight ratio
- Rotation speed
- Different shaft and flange versions

Intended applications:

- Machines for forestry and agricultural purposes
- Fan drives
- Construction machines
- Municipal trucks

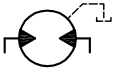


Nomenclature:	Axial piston fixed motor
Design:	Individual motor
p_{max}:	400 bar
V_{g max}:	130 cm ³ /rev

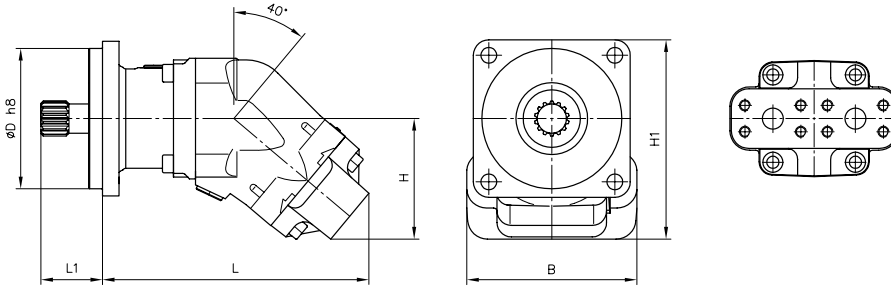
Design and order coding example

M60N	- 064	B	S	F	N	- S1	00	-G
							Ports	
							Speed sensor	With/without speed sensor
							Version with housing	<ul style="list-style-type: none"> ▪ Axial version ▪ Radial version
							Seals	NBR (N), FKM (V), HNBR (H)
							Flange version	<ul style="list-style-type: none"> ▪ Flange ISO 7653 - 1985 ▪ Flange SAE J744 ▪ Flange ISO 3019 - 2
							Shaft version	<ul style="list-style-type: none"> ▪ ISO 14 parallel key splined shaft ▪ SAE J744 parallel key ▪ SAE J744 spline shaft and flange ▪ DIN 6885 parallel key
							Rotating direction	Any (B)
							Nominal size	
							Basic type	

Function



General parameters and dimensions



Parameters

	Geom. displacement V_g [cm ³ /rev]	Nom. pressure p_{nom} (p_{max}) [bar]	Max. speed n [rpm]	Dimensions [mm]						m [kg]
				L	L1	H	H1	B	ØD	
M60N- 012	12,6	350	7500	206	46	97	147,8	-	101,6	9
M60N- 017	17,0	350	7500	206	46	97	147,8	-	101,6	9
M60N- 025	25,4	350	5900	206	46	97	147,8	-	101,6	9
M60N- 034	34,2	350	5900	206	46	97	147,8	-	101,6	9
M60N- 040	41,2	350	5300	242	56	97	147,8	-	101,6	9
M60N- 047	47,1	350	5300	242	56	109	172,5	155	127	9
M60N- 056	56,7	350	5300	242	56	109	172,5	155	127	9
M60N- 064	63,5	350	5300	242	56	109	172,5	155	127	9
M60N- 084	83,6	350	4400	264	56/74	129	192.5/205.2	-	127/152.4	18/35
M60N- 090	90,7	350	4400	264	56/74	129	192.5/205.2	-	127/152.4	18/35
M60N- 108	108,0	350	4400	264	56/74	129	192.5/205.2	-	127/152.4	18/35
M60N- 130	130,0	350	4200	264	56/74	129	192.5/205.2	-	127/152.4	18/35

Associated technical data sheets:

- Axial piston motors type M60N: [D 7960 M](#)

Similar products:

- Fixed displacement axial piston pumps type K60N: , [D 7960 K](#)

Suitable proportional directional spool valve:

- Type EDL: [D 8086](#)
- Type PSL/PSV size 2, 3 and 5: [D 7700-2](#), [D 7700-3](#), [D 7700-5](#)
- Type PSLF/PSVF size 3, 5 and 7: [D 7700-3F](#), [D 7700-5F](#), [D 7700-7F](#)

Suitable load-holding valves:

- Type LHK, LHDV, LHT: [D 7100](#), [D 7770](#), [D 7918](#)